



Quality events with the
authentic flavor of **Tenerife**



Casa del Vino 
de Tenerife



MEETINGS - CONGRESSES - COURSES - BANQUETS - INCENTIVES



Introduction

Those who seek the most authentic experience without compromising on quality will find the ideal setting for their event at the **Casa del Vino in Tenerife**. Its multiple and unique spaces, the quality of its gastronomic offerings, and the elegance of its traditional architecture come together to turn your meeting, conference, course, banquet or incentive into a success.

The unbeatable location of the Casa, next to the North Tenerife highway, and its large parking facilities add advantages to an always wise decision.



Location

The Casa del Vino is located just a few meters from the El Sauzal exit on the TF-5 highway, approximately 20 minutes from Puerto de la Cruz, 20 minutes from Santa Cruz and 60 minutes from the main tourist areas in the south. It offers large free parking facilities.



Parking

The Casa has a large parking divided into two areas:

Parking A: 350 m²

Parking B: 1.500 m²





The House

The visit to Finca La Baranda, where Casa del Vino is located, is highly appealing due to the beauty of its 17th-century Canarian architecture and the magnificent views it offers of Mount Teide and the sea.

Upon entering through its main entrance, we encounter one of the gems of our traditional architecture, the wine press located in the central courtyard.

The Wine



Tastings

The visit to Casa del Vino will allow you to discover and taste the wines of Tenerife, known for their uniqueness and wide variety. In our tasting room, you can sample wines by the glass and pair them with some of the island's specialties, such as our honeys from endemic varieties, artisan cheeses or locally produced extra virgin olive oils, among other locally sourced products.

Wine Store

We have a wine store where you can purchase a wide variety of wines and products from the island of Tenerife.

Wine Museum

If you want to learn more about the history and peculiarities of our wines, be sure to visit the Wine Museum.

Vineyard and Native Plant Garden

Tenerife boasts a wide range of traditional grape varieties as well as endemic plants. Here, you can enjoy a pleasant stroll through our garden and learn about them.

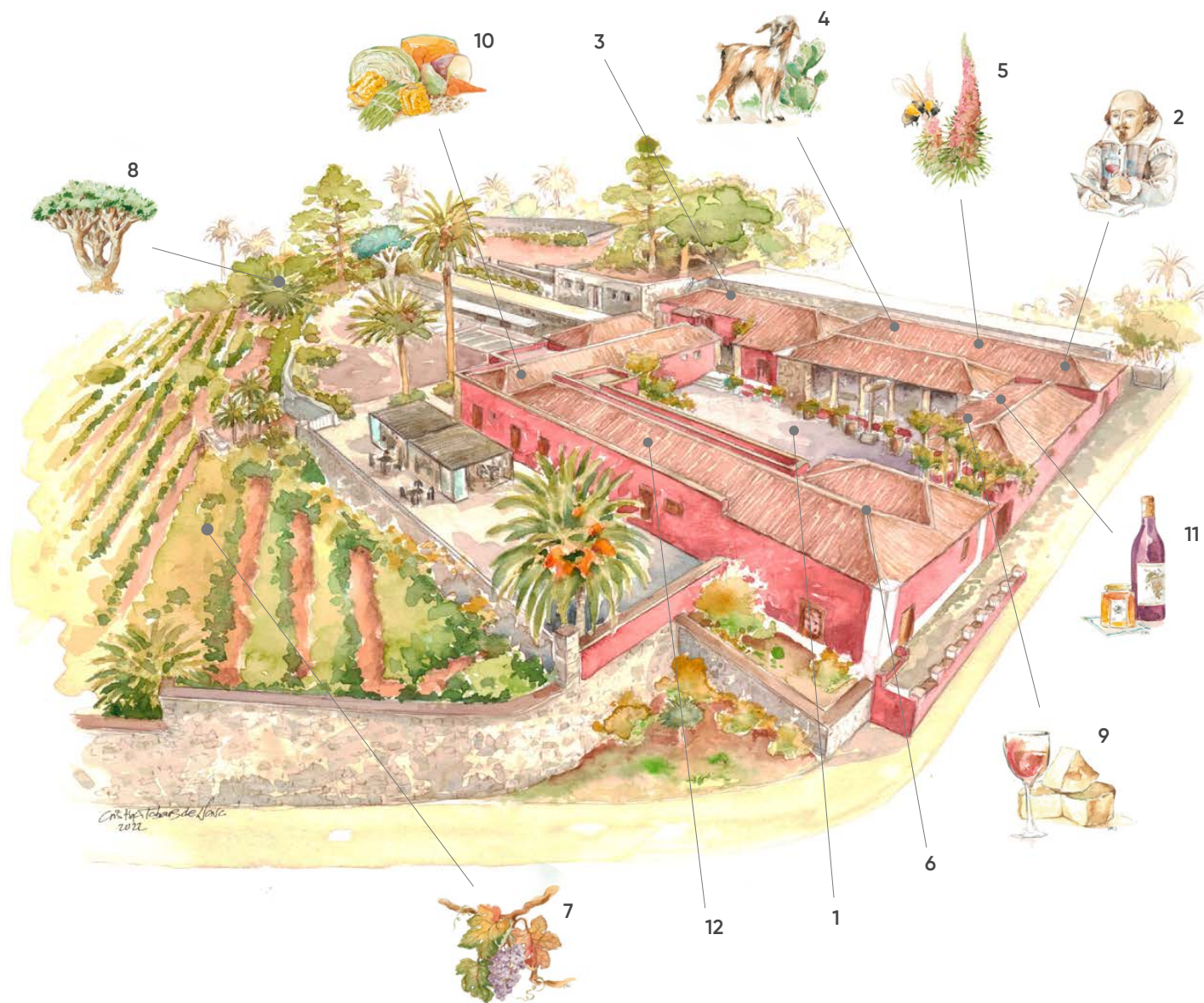
Workshops and Courses

We regularly hold workshops and activities on wines and other products of our local gastronomy.

Events






The uniqueness of the space and the spaciousness of our facilities make them ideal for organizing events for individuals and companies.

Facilities



- 1  Lagar Courtyard – Starting point of the visit



Discover

- 2  Tenerife Wine Museum
- 3  The Medianeros Room
- 4  Tenerife, Island of Agrodiversity
- 5  Honey Visitors Center
- 6  Chapel

Garden

- 7  Vineyard Garden
- 8  Canarian Garden

Taste

- 9  Tastings
- 10  Restaurant – Terrace

Shop

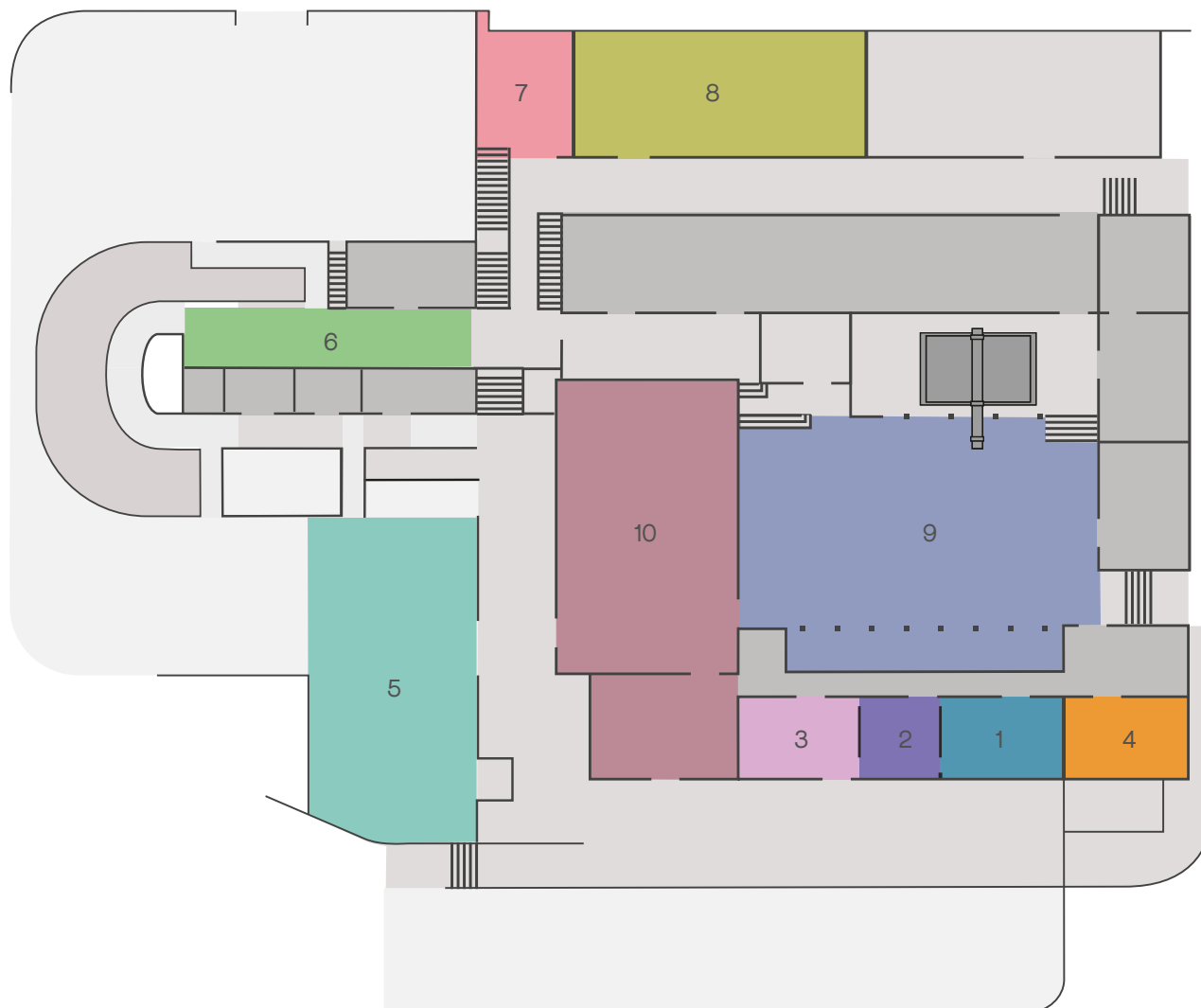
- 11  Store

Cultural

- 12  Exhibition Room

Halls

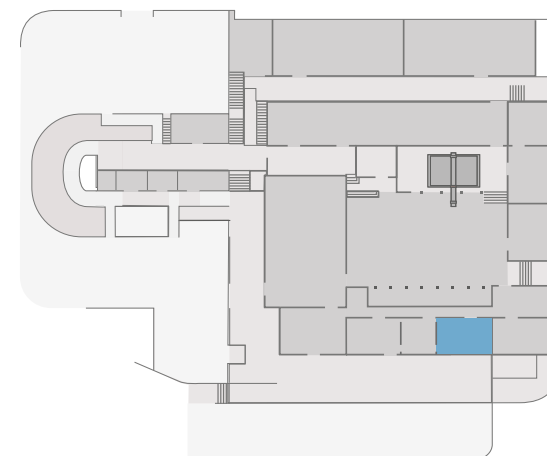
Malvasia Hall	1	pag. 9
Tintilla Hall	2	pag. 10
Listan hall	3	pag. 11
Vijariego Hall	1+2+3	pag. 12
Marmajuelo Hall	1+2	pag. 13
Negramoll Hall	2+3	pag. 14
Old Chapel	4	pag. 15
Picón terrace	5	pag. 16
Mirador terrace	6	pag. 17
Aljibe Hall	7	pag. 18
Agrodiversidad Hall	8	pag. 19
Central Courtyard	9	Pag. 20
Restaurant	10	Pag. 21



i For more information, please check our combination of rooms and spaces. You will find one that suits your needs and budget.



Malvasia Hall



Surface: 30 m²

Length: 6,25 m

Width: 4,80 m



Services:

- WiFi
- Flipchart
- Projector
- Sound system
- DVD player
- Fixed screen



Maximum capacity: 50 people

(Reception setup)

CAPACITY ACCORDING TO SETUP



Theater
40



Imperial
20



Classroom
20



U-shape
15



Meeting
20



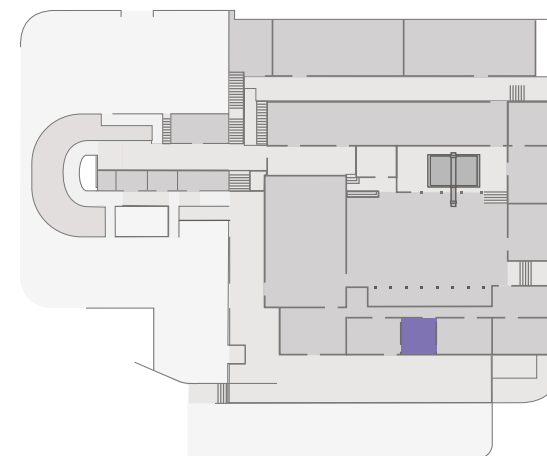
Banquet
30



Reception
50



➤ Tintilla Hall



Surface: 23 m2

Length: 4,85 m

Width: 4,80 m



Maximum capacity:
20 people

(Reception setup)



Services:

- WIFI
- Flipchart
- Projector
- Sound system
- DVD player
- Auxiliary screen

CAPACITY ACCORDING TO SETUP



Theater
18



Imperial
10



Classroom
80



U-shape
11



Meeting
10



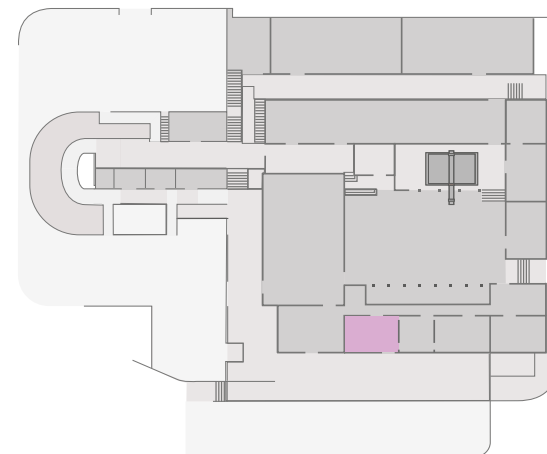
Banquet
15



Reception
20



➤ Listan Hall



Surface: 43 m²

Length: 8,95 m

Width: 4,80 m



Maximum capacity: 140 people

(Reception setup)



Services:

- WIFI
- Flipchart
- Projector
- Sound system
- DVD player
- Auxiliary screen

CAPACITY ACCORDING TO SETUP



Theater
100



Imperial
28



Classroom
18



U-shape
50



Meeting
40



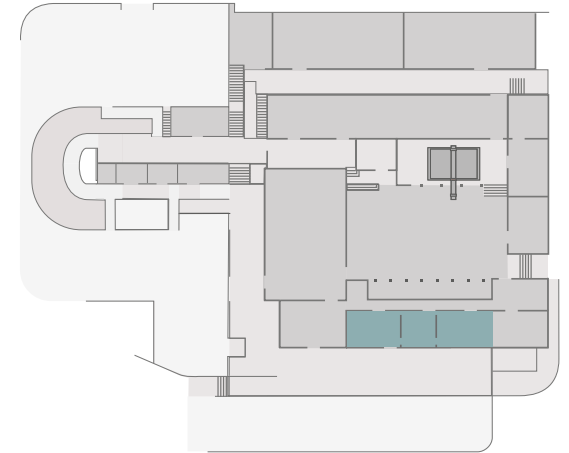
Banquet
50



Reception
140



➤ Vijariego Hall



Surface: 96 m2

Length: 20,05 m
Width: 4,80 m



Services:

- WIFI
- Flipchart
- Projector
- Sound system
- DVD player
- Fixed screen



Maximum capacity: 210 people
(Reception setup)

CAPACITY ACCORDING TO SETUP



Theater
158



Imperial
58



Classroom
46



U-shape
76



Meeting
70



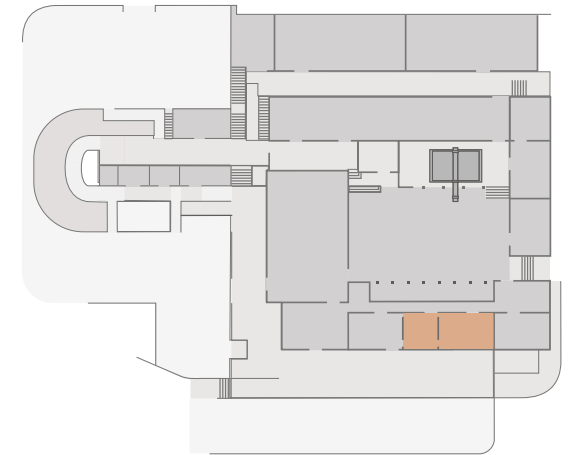
Banquet
95



Reception
210



➤ Marmajuelo Hall



Surface: 53 m²

Length: 11,10 m
Width: 4,80 m



**Maximum capacity:
70 people**

(Reception setup)



Services:

- WIFI
- Flipchart
- Projector
- Sound system
- DVD player
- Fixed screen

CAPACITY ACCORDING TO SETUP



Theater
58



Imperial
30



Classroom
28



U-shape
26



Meeting
30



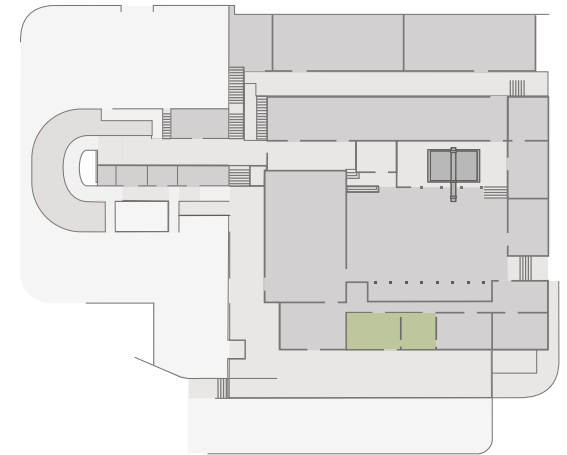
Banquet
45



Reception
70



➤ Negramoll Hall



Surface: 66 m²

Length: 13,80 m
Width: 4,80 m



Maximum capacity:
160 people

(Reception setup)



Services:

- WIFI
- Flipchart
- Projector
- Sound system
- DVD player
- Auxiliary screen

CAPACITY ACCORDING TO SETUP



Theater
118



Imperial
38



Classroom
26



U-shape
61



Meeting
50



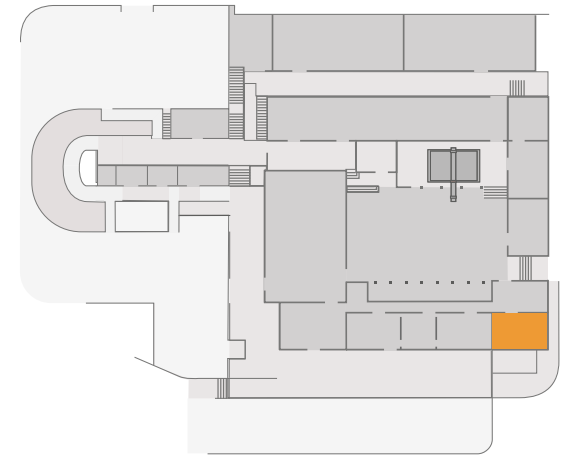
Banquet
65



Reception
160



> Old Chapel



Surface: 37 m²

Length: 7,80 m
Width: 4,80 m



Services:

- WIFI
- Flipchart
- Projector
- Sound system
- Auxiliary screen



Maximum capacity: 40 people
(Reception setup)

CAPACITY ACCORDING TO SETUP



Theater
35



Imperial
18



Classroom
18



U-shape
14



Meeting
20



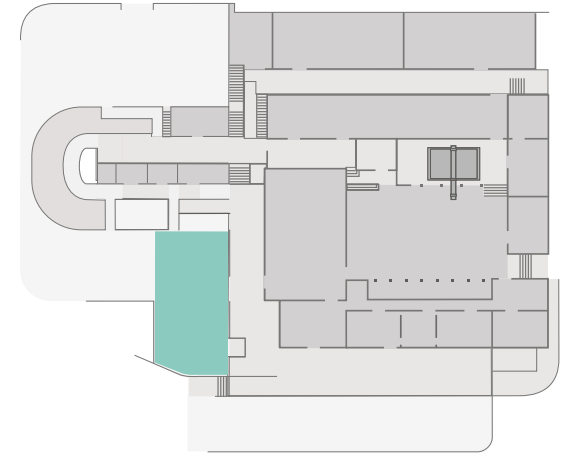
Banquet
30



Reception
40



➤ Picon Terrace



Surface: 264 m²

Length: 22 m
Width: 12 m



Services:

- Flipchart
- Sound system
- Projector
- Auxiliary screen



Maximum capacity: 300 people
(Reception setup)

CAPACITY ACCORDING TO SETUP



Theater
200



Imperial
-



Classroom
-



U-shape
-



Meeting
-

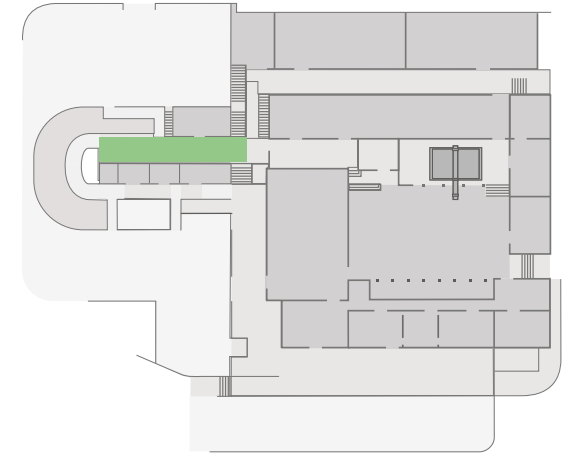


Banquet
200



Reception
300

➤ Mirador Terrace



Surface: 320 m²

Length: 40 m
Width: 8 m



Services:

- Flipchart
- Projector
- Sound system
- Auxiliary screen



Maximum capacity: 500 people
(Reception setup)



CAPACITY ACCORDING TO SETUP



Theater
350



Imperial
250



Classroom
200



U-shape
120



Meeting
-



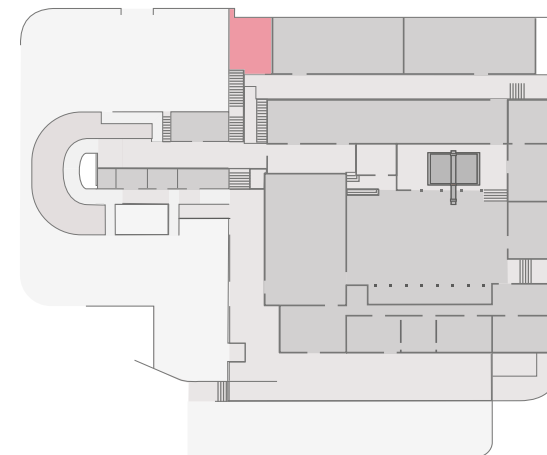
Banquet
300



Reception
500



> Aljibe Hall



Surface: 23 m²

Length: 5,2 m

Width: 4,5 m



Services:

- Flipchart
- Sound system
- Projector
- Auxiliary screen



Maximum capacity: 10 people

(Reception setup)

CAPACITY ACCORDING TO SETUP



Theater

–



Imperial

–



Classroom

–



U-shape

–



Meeting

10



Banquet

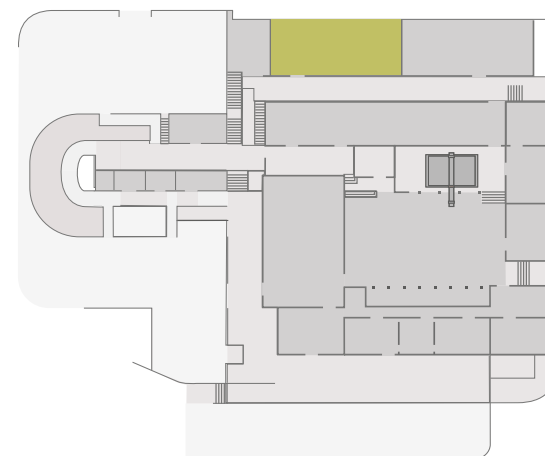
–



Reception

–

➤ Agrodiversity Hall



Surface: 92 m²

Length: 14,67 m

Width: 6,30 m



Services:

- Flipchart
- Sound system
- Projector
- Auxiliary screen



Maximum capacity: 80 people

(Reception setup)



CAPACITY ACCORDING TO SETUP



Theater
70



Imperial
30



Classroom
40



U-shape
25



Meeting
32



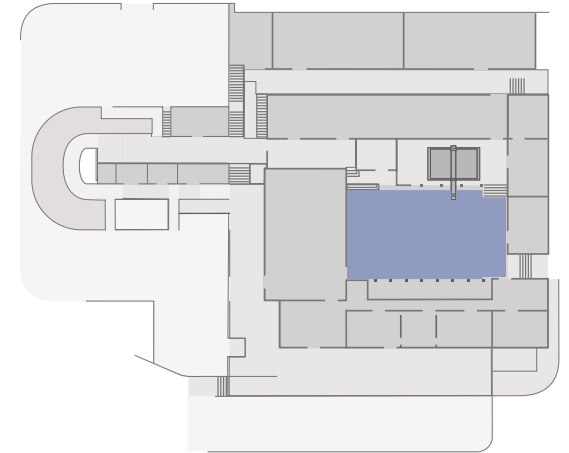
Banquet
50



Reception
80



➤ Central Courtyard



Surface: 420 m²

Length: 17,5 m

Width: 24 m



Services:

- WIFI
- Sound system
- Projector
- Auxiliary screen



Maximum capacity: 400 people

(Reception setup)

CAPACITY ACCORDING TO SETUP



Theater
250



Imperial
—



Classroom
—



U-shape
—



Meeting
—



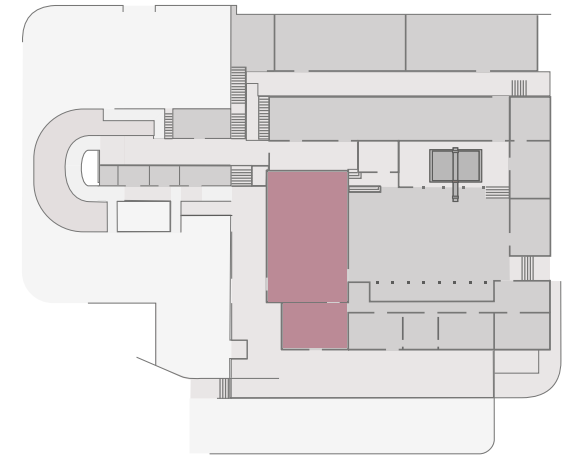
Banquet
200



Reception
400



➤ Restaurant



The catering services at Casa del Vino combine tradition and creativity to make your event a truly special occasion in terms of gastronomy as well. Provided by the Casa's restaurant, their culinary offerings include a wide range of options for banquets, cocktails, and other services such as breakfasts and working lunches, always using the finest local market products and Canarian recipes as the foundation of a surprising cuisine. The best wines from Tenerife complement a menu tailored to meet all needs.



Casa del Vino de Tenerife



C/ San Simón, 49 · 38360 · El Sauzal
Tenerife · Canary Islands

t. 922 572 535

casadelvino@teneriferural.org

www.casadelvinodetenerife.com

